



WI-LTE113-O

## 1. Packing Content



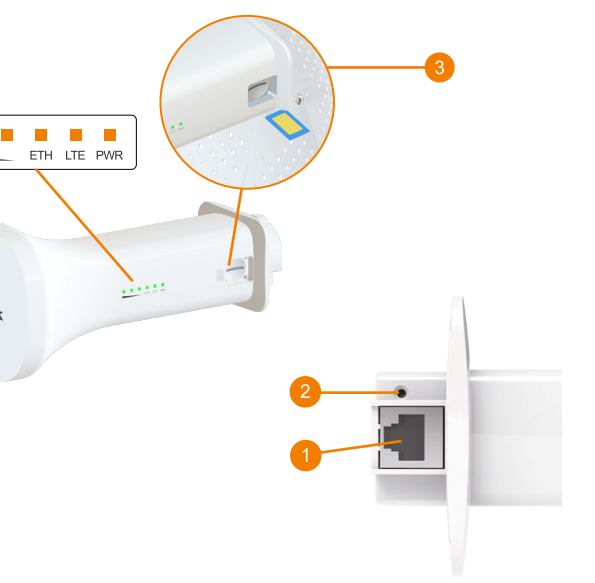
WI-LTE113-O x 1

- 1 x Quick Installation Guide
- 1 x 24V POE Adapter
- 1 x Metal Strap

- 1 x Feedhorn
- 1 x Dish
- 1 x Feed Receiver
- 1 x Ball Joint Mount

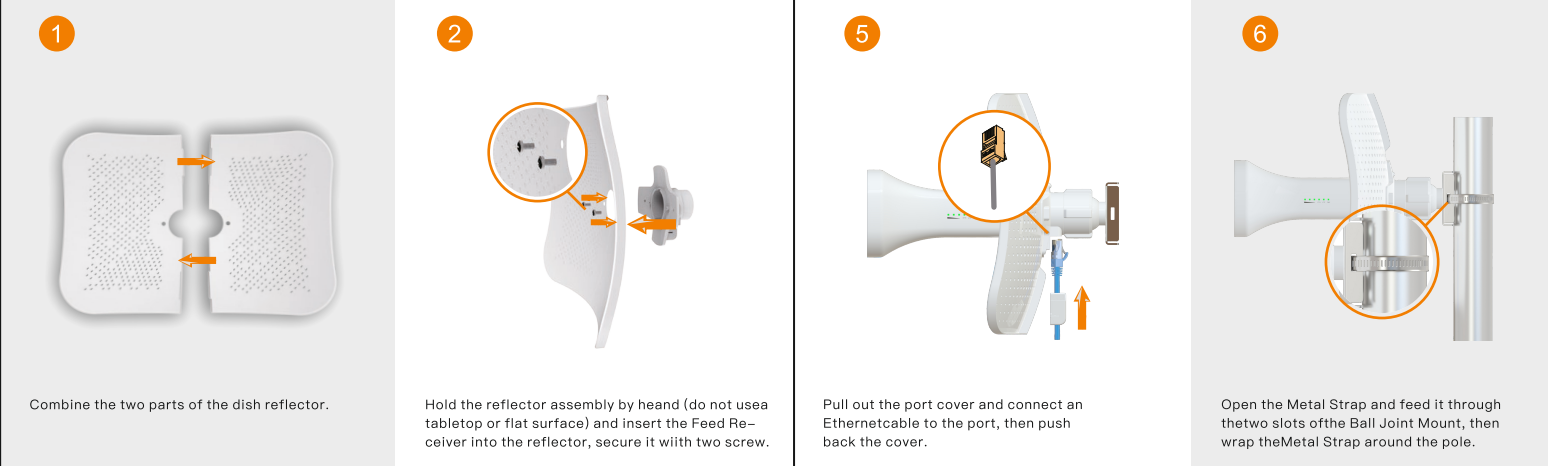
## 2. Hardware Overview

• WI-LTE113-O



LED	Description	No.	Description
PWR	On: the radio is powered up Off: not connected to the internet	1	Ethernet port
	On: the wire connection is available Flashing: wire data transferring	2	Reset button Press more than 8s to restore factory settings
		3	SIM Slot : Micro SIM Card

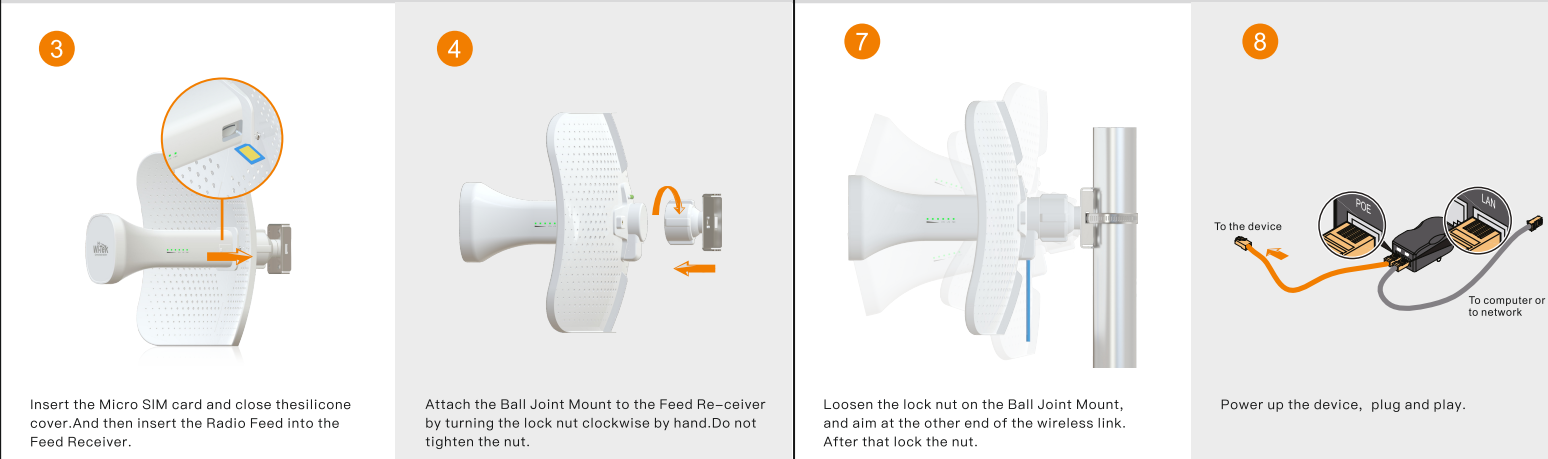
## 3. Mounting



Combine the two parts of the dish reflector.

Hold the reflector assembly by hand (do not use a tabletop or flat surface) and insert the Feed Receiver into the reflector, secure it with two screw.

**WARNING**  
Do not install the Feed Receiver into the reflector assembly by pushing down onto a tabletop or other flat surface as this can deform the panels. Hold the reflector assembly by hand.



Insert the Micro SIM card and close the silicone cover. And then insert the Radio Feed into the Feed Receiver.

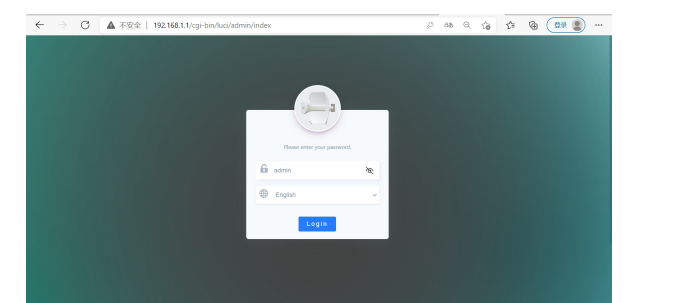
Attach the Ball Joint Mount to the Feed Receiver by turning the lock nut clockwise by hand. Do not tighten the nut.

Loosen the lock nut on the Ball Joint Mount, and aim at the other end of the wireless link. After that lock the nut.

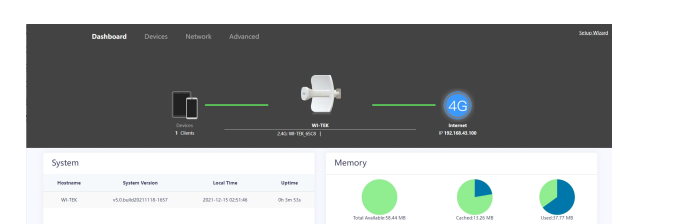
Power up the device, plug and play.

## 4. Web configuration

Launch your web browser then enter <http://192.168.1.1> in the address bar and specify the default login key: admin.



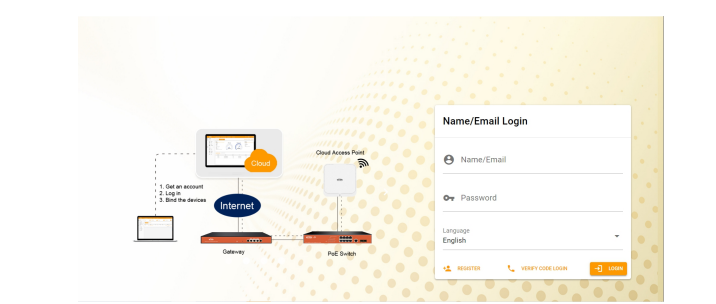
Configuration complete.



## 5. Cloud Management Setting(Optional)

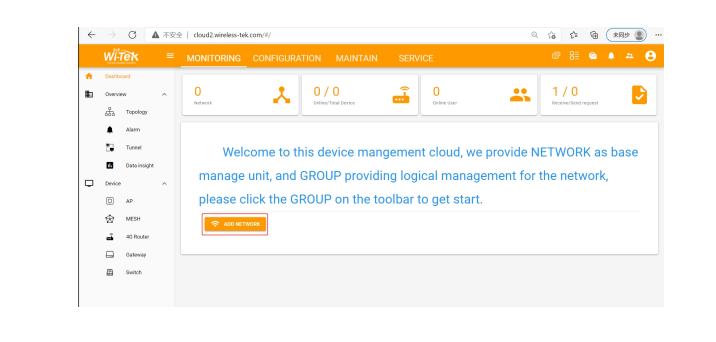
### Cloud management settings

- Step 1 Launch your web browser then enter <http://cloud2.wireless-tek.com> in the address bar.
- Step 2 Register an account password by user name or email.
- Step 3 log in to the cloud account with the account password after registration.



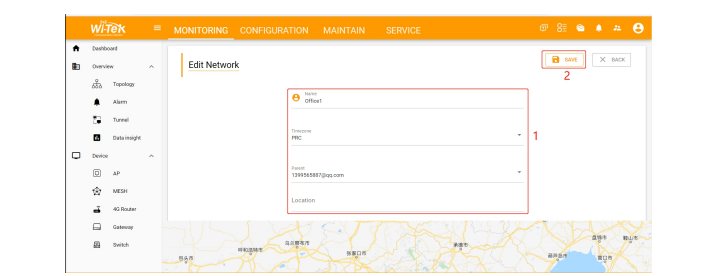
After the login is successful, the steps to bind the device on the cloud account are as follows:

1) Click ADD NETWORK

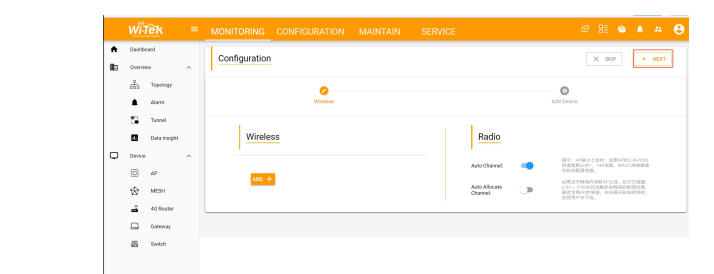


## 6. Cloud Management Setting(Optional)

2) Fill in the group name and location, click save.



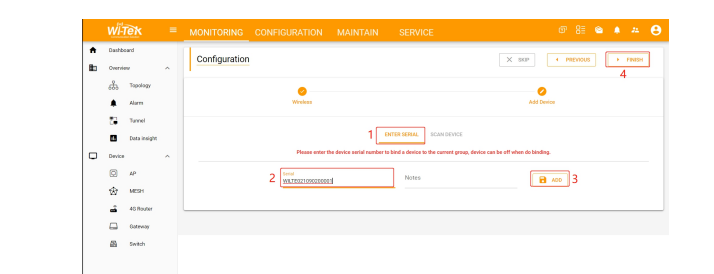
3) And click next.



4) Enter serial number, click ADD to create and click FINISH, the configuration is complete.

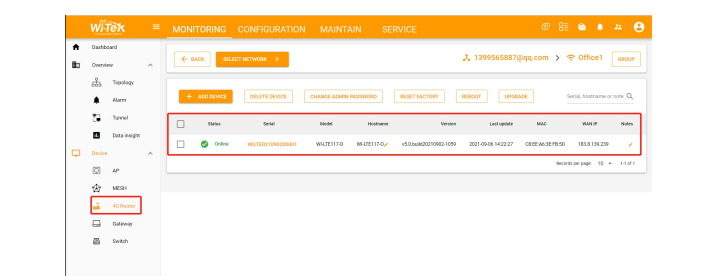
Note:

The 17-digit SN code of the 4G Router is shown on the sticker on the back of the device.

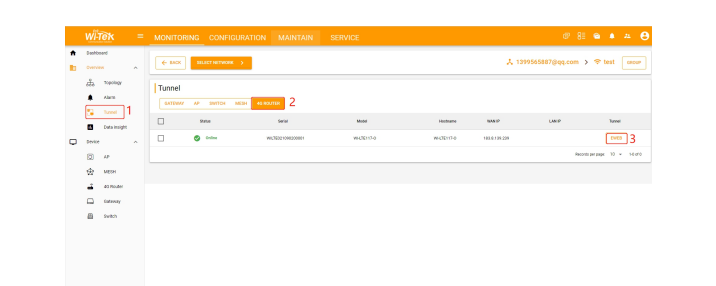


## 7. Cloud Management Setting(Optional)

5) In the relevant device options, you can see the bound device information.



6) Click Tunnel, select 4G Router, click EWEB to log in to the device.



## Warranty Card

Username	
Address	
Telephone No.	
Purchase Shop	
Purchase Address	
Product Model No.	
Purchase Time	
Serial No.	
Dealer Signature	

- If the product defects within the warranty period, we will provide professional maintenance service.
- Proof of purchase and a complete product serial number are required to receive any services guaranteed as part of the limited warranty.
- Any other defects that are not caused by workmanship or product quality, such as natural disasters, water damage, extreme thermal or environmental conditions, sticker damaged, warranty card loss will disqualify the product from limited warranty.



Wireless-Tek Technology Limited  
 Address: Building 3, Units 1801-1807, 1812, Huaqiang Era Plaza, Tangwei Community, Fuhai Street, Bao'an District, Shenzhen City, Guangdong Province, China.  
 Website: [www.wireless-tek.com](http://www.wireless-tek.com)  
 Tel: 86-0755-32811290  
 Email: [sales@wireless-tek.com](mailto:sales@wireless-tek.com)  
 Technical Support: [tech@wireless-tek.com](mailto:tech@wireless-tek.com)