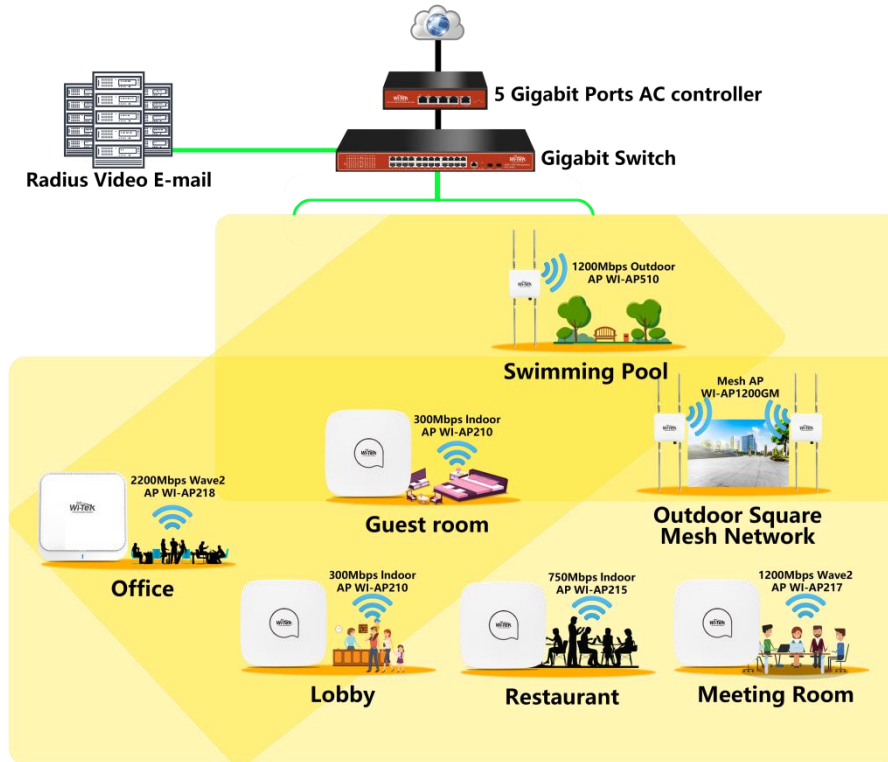


## How to Manage Wireless Settings on AC Controller?

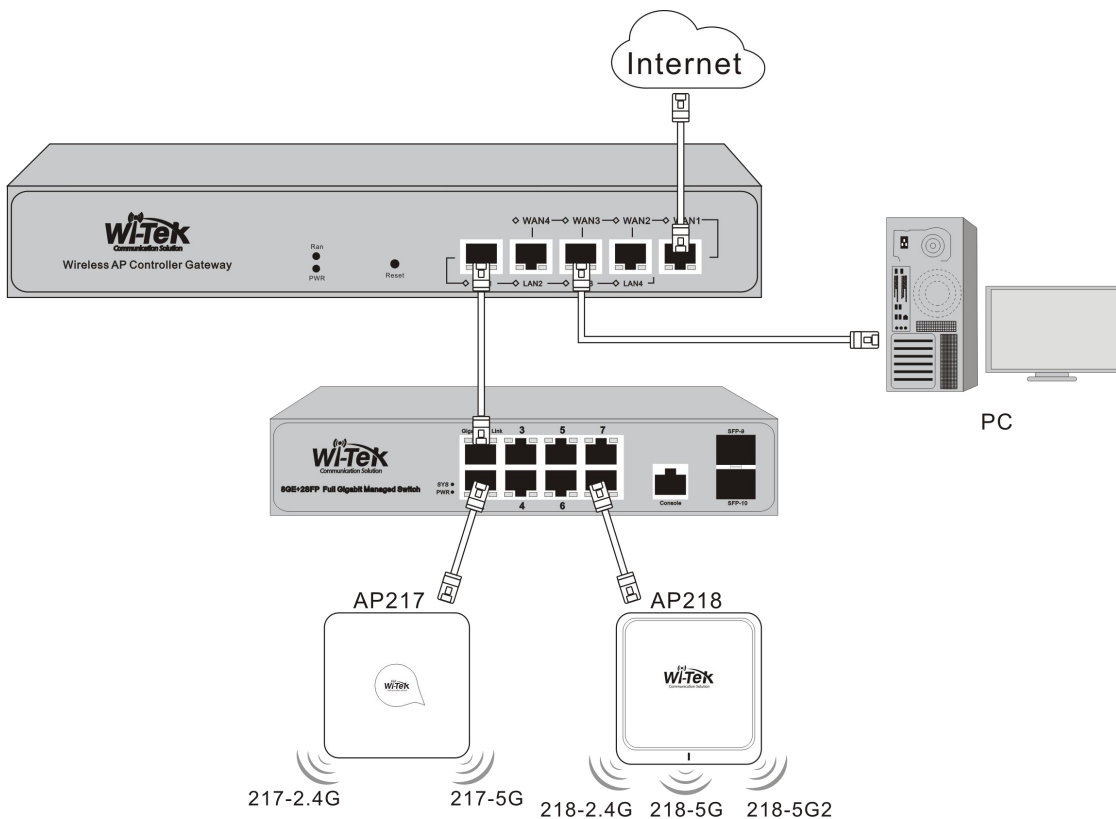


## Background

AC controller is a easy and common method for AP centralized management in SMB environment. The following picture is a complete Wi-Tek wireless hotspot system.



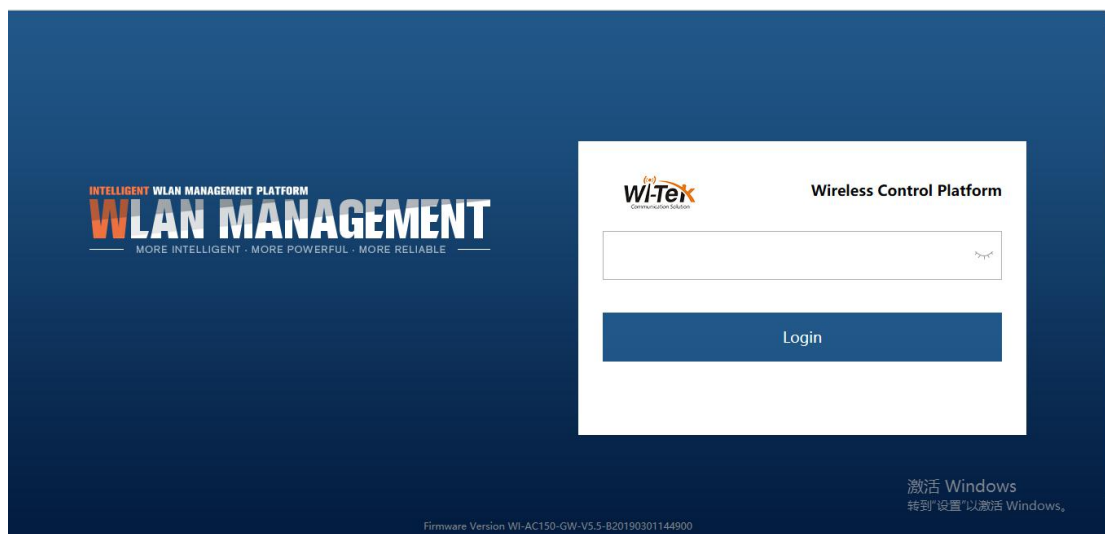
## Application Scenario



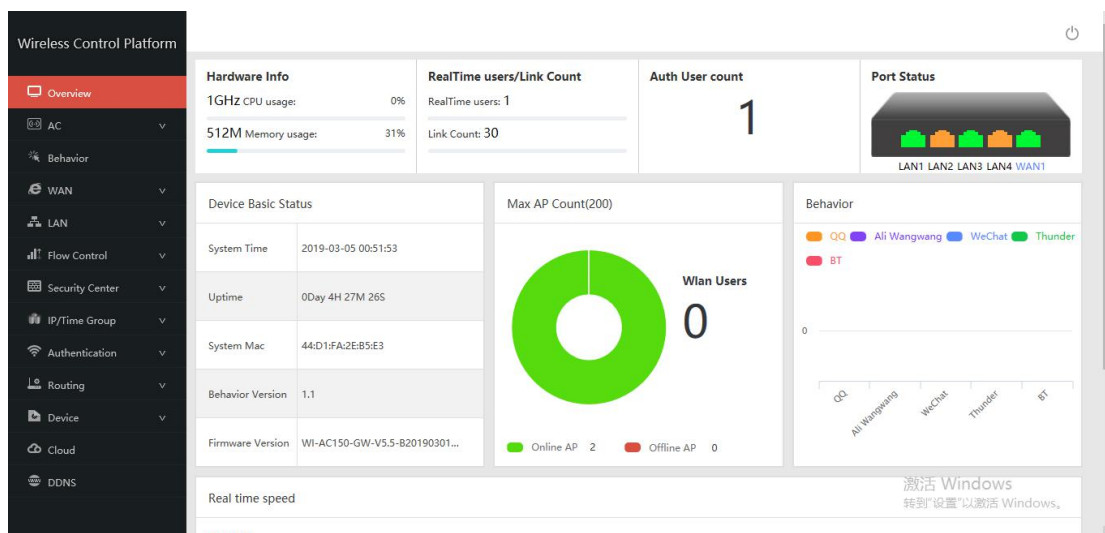
- Requirement: Customize the wireless settings of APs on AC controller.

**Note: The AC controller can only centralized manages the AP which under fit AP operation mode. Please make sure the connected APs are all under fit AP mode.**

Step 1. On PC, please launch a browser, such as Google Chrome, Firefox, type 192.168.10.1 into address bar, press enter, Wi-Tek management page will pop up.



The default password is admin, after type in login password, click on **[Login]**, you will get in Wi-Tek management page.



Step 2. On the left side column, please go to **[AC]-[Device List]**, the subordinate APs will appear in information list.

Wireless Control Platform

Device List All AP 2/200 Online AP 2 Offline AP 0 Wlan Users 0 All AP Per page show Default

Search Batch Set Delete Reboot Reset Local Upgrade Online Upgrade

	SN	Name	IP	MAC	SSID	Users	Channel	Txpower	Device Model	Uptime	Group	Config
<input type="checkbox"/>	1		192.168.200.3	44:D1:FA:39:04:58	WI-TEK_2.4G/WI-TEK_5G	0	6/157	100%/100%	WI-AP217	18:54:10		<input checked="" type="checkbox"/>
<input type="checkbox"/>	2		192.168.200.2	44:D1:FA:50:78:48	WI-TEK_2.4G/WI-TEK_5G/...	0	1/140/157	100%/100%/100%	WI-AP218	18:54:00		<input checked="" type="checkbox"/>

**IP Address:** The AC exclusive server assigned managed IP address for subordinate APs.


**MAC:** MAC address of APs.

**SSID:** Wireless network name of APs of different band.

**Users:** The quantity of users who connect to the wireless signal.

**Channel:** Wireless Channel for all band.

**Tx Power:** Wireless transmit power status of AP.

Click on  Config button to customize the wireless settings.

Wlan Device Config

Status

Device Model WI-AP217

Uptime 19:08:53

Network

MAC 44:D1:FA:39:04:58

Basic

IP 192.168.200.3

Version WI-AP217-AP-V5.2-Build20190111160034

Advanced

SSID WI-TEK\_2.4G/WI-TEK\_5G

BSSID 44:D1:FA:39:04:59/44:D1:FA:39:04:5A

Channel 6/157

Apply

Security WPA2-PSK-AES/WPA2-PSK-AES

RF Output Power 100%/100%

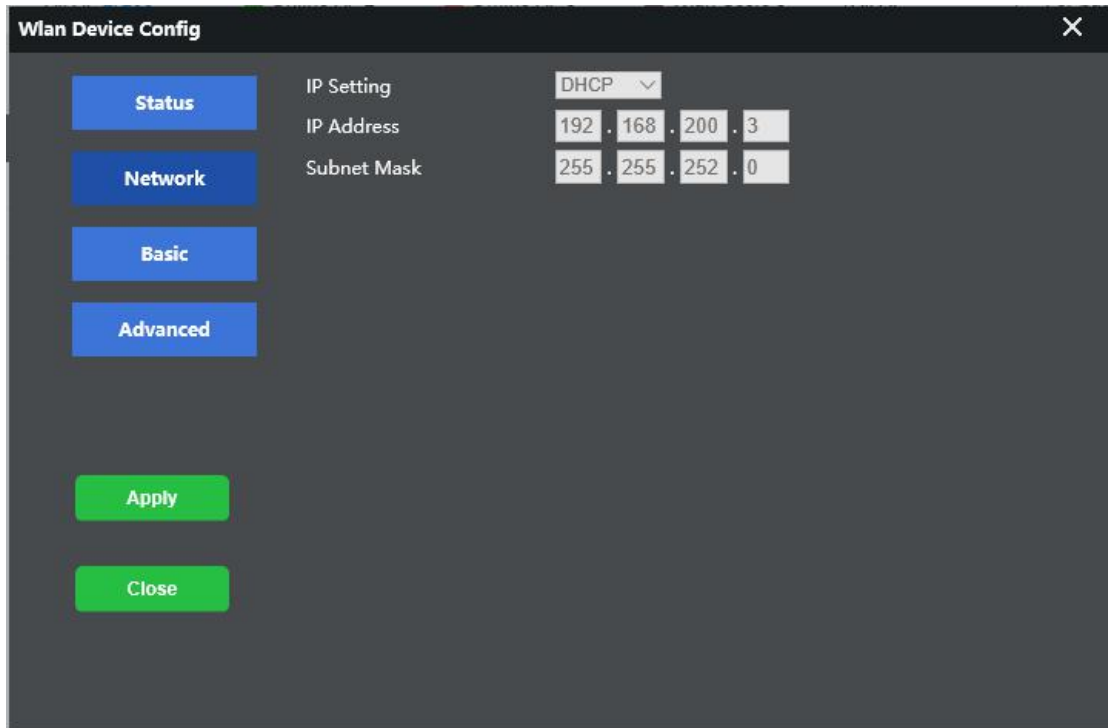
Close

Beacon Interval 100/100

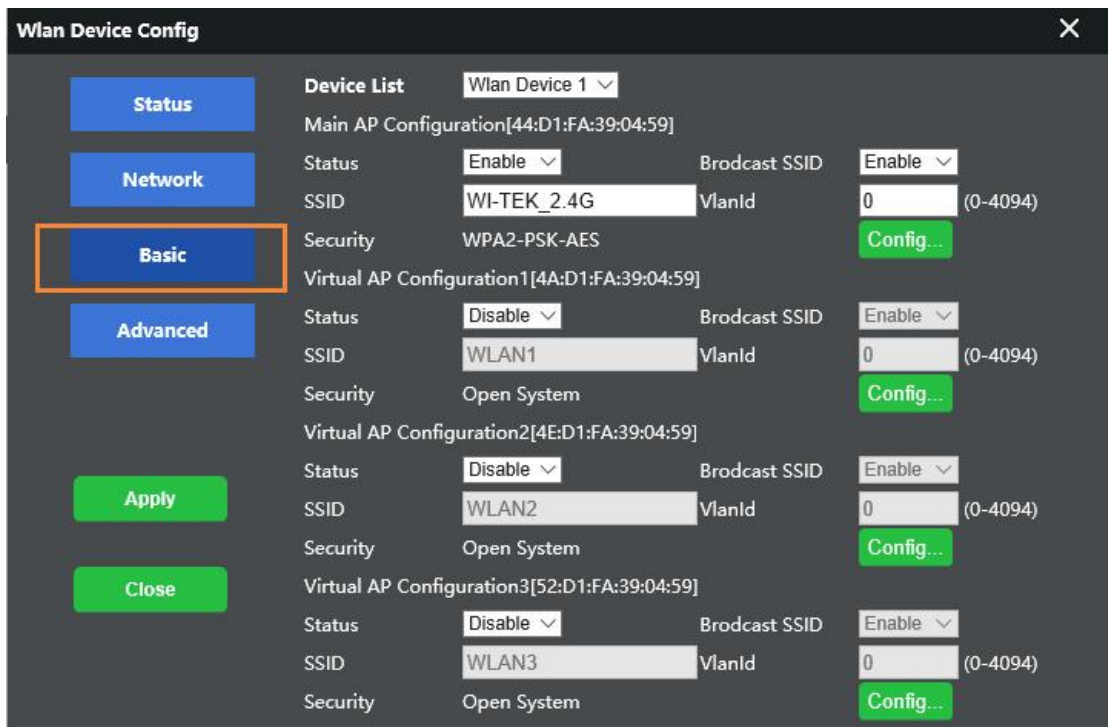
Coverage Threshold -90/-90

Time to restart Disabled

**Status** page shows the basic information of this AP, such as model number, firmware version, SSID, channel etc.



Network page shows the LAN IP information of this AP.

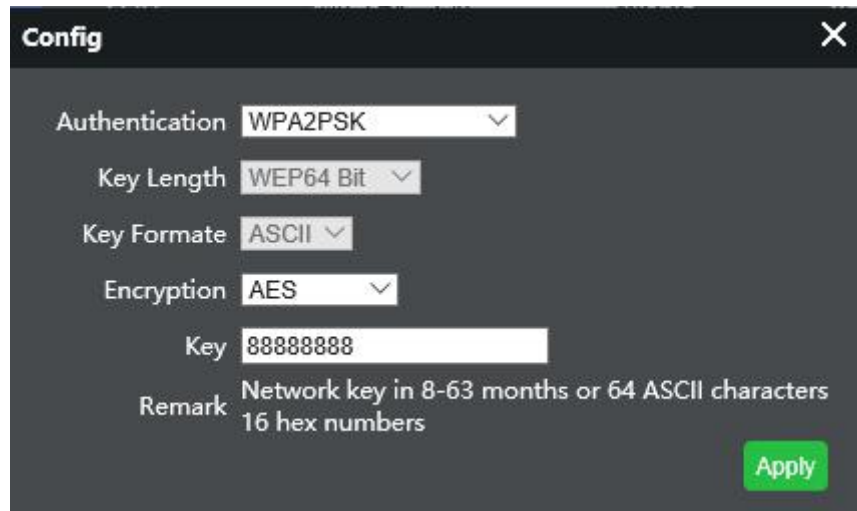


In Basic page, you can customize wireless settings, such as SSID, security password for Wi-Fi signal, and SSID binding VLAN ID.

**Device List:** WLAN Device 1 is 2.4GHz, WLAN Device 2 is 5GHz, WLAN

Device 3 is 5GHz.

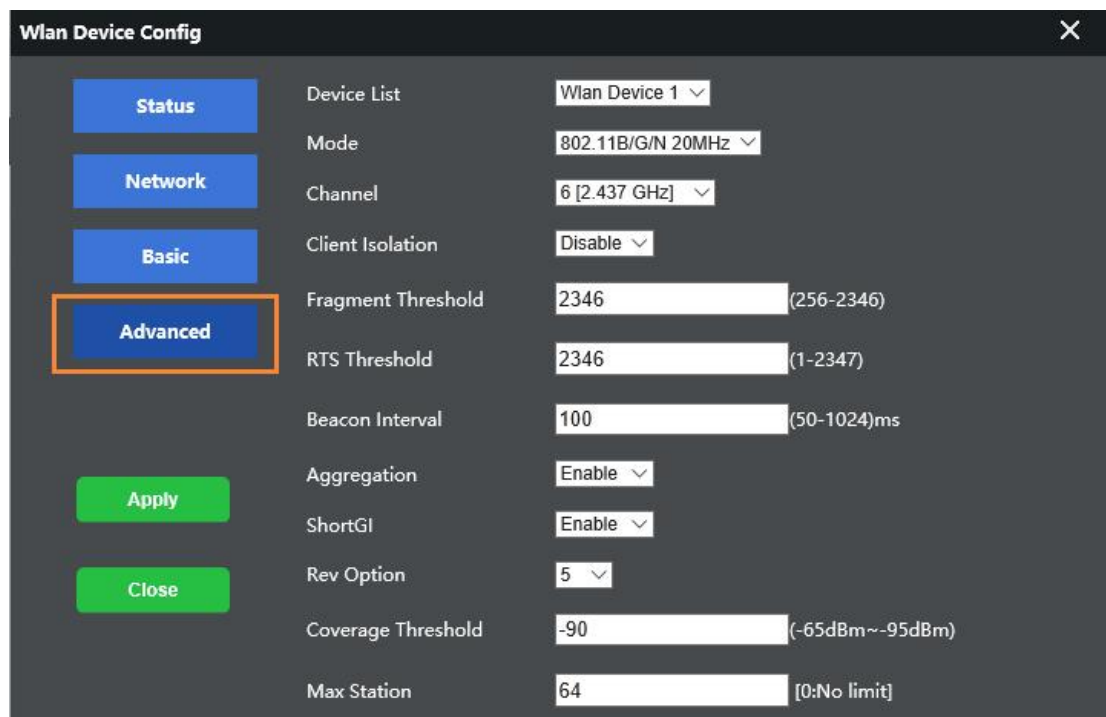
**Security:** Click on **[Config]** button, you can change the wireless encryption type and password. After customize the security settings, please click on **[Apply]** to save the settings.



The 'Config' dialog box shows the following settings:

Authentication	WPA2PSK
Key Length	WEP64 Bit
Key Formate	ASCII
Encryption	AES
Key	88888888
Remark	Network key in 8-63 months or 64 ASCII characters 16 hex numbers

An 'Apply' button is located at the bottom right of the dialog.



The 'Wlan Device Config' dialog box has a sidebar with tabs: Status, Network, Basic, and Advanced. The 'Advanced' tab is selected and highlighted with an orange border. The main area shows the following settings:

Device List	Wlan Device 1
Mode	802.11B/G/N 20MHz
Channel	6 [2.437 GHz]
Client Isolation	Disable
Fragment Threshold	2346 (256-2346)
RTS Threshold	2346 (1-2347)
Beacon Interval	100 (50-1024)ms
Aggregation	Enable
ShortGI	Enable
Rev Option	5
Coverage Threshold	-90 (-65dBm~-95dBm)
Max Station	64 [0:No limit]

Buttons for 'Apply' and 'Close' are located at the bottom left of the dialog.

**Advanced:** Information of advanced wireless parameters, such as 802.11 mode, channel, client isolation, threshold etc.

After finish all the configuration, please click on **[Apply]** to save all settings.

**Wlan Device Config** ✕

**Status**

**Network**

**Basic**

**Advanced**

**Apply**

**Close**

Device Model	WI-AP217
Uptime	19:47:02
MAC	44:D1:FA:39:04:58
IP	192.168.200.3
Version	WI-AP217-AP-V5.2-Build20190111160034
SSID	WI-TEK_2.4G/WI-TEK_5G
BSSID	44:D1:FA:39:04:59/44:D1:FA:39:04:5A
Channel	6/0
Security	WPA2-PSK-AES/WPA2-PSK-AES
RF Output Power	100%/100%
Beacon Interval	100/100
Coverage Threshold	-90/-90
Time to restart	Disabled