



WI-PS105-24V
5-Port 24V 100Mbps
PoE Switch with 4-Port PoE
Data sheet

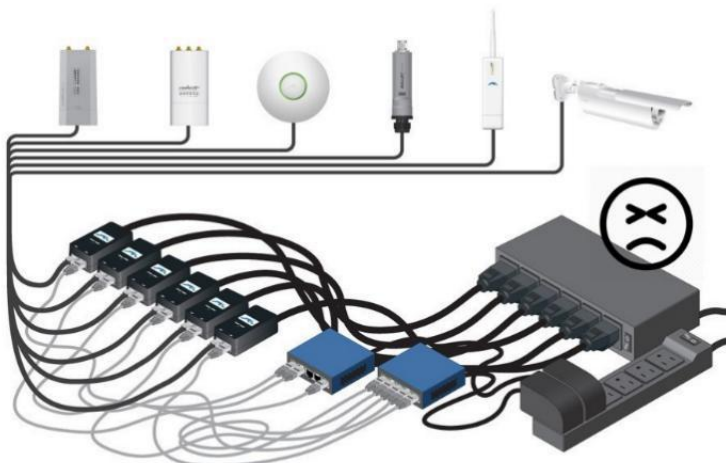
Highlights

- 4FE+2FE uplink 24V Passive PoE Switch with 4Port PoE
- Supports PoE power up to 24W (24V 1A) for each port
- Supports 24V Passive PoE compliant PDs
- Internal power adapter supply 65W output power
- LED indicators for LINK/ACT, Power, PoE Status, 100Mbps
- 2K entry MAC address table with auto-learning and auto-aging

Product



Typical Applications



Description

what this product does

WI-PS105-24V is a 6-port 10/100Mbps unmanaged switch that requires no configuration and provides 4 PoE ports. The switch provides an easy way to expand your wired network. All 6 ports support auto-MDI/MDIX, eliminating the need to worry about the type of cable to use. Featuring full duplex mode, the WI-PS105-24V can process data at a rate of up to 200Mbps making it an ideal choice for expanding your high performance wired network. Moreover, with innovative energy-efficient technology, the WI-PS105-24V can save up to 68% of power consumption, making it an eco-friendly solution for your home or office network.

High Performance

WI-PS105-24V Fast Ethernet Switch provides 6 10/100Mbps Auto-Negotiation RJ45 ports. All ports support Auto MDI/MDIX function, eliminating the need for crossover cables or Uplink ports. Featuring non-blocking switching architecture, WI-PS105-24V forwards and filters packets at full wire-speed for maximum throughput. With 10240Bytes Jumbo frame, the performance of large files transfers is improved significantly. And IEEE 802.3x flow control for Full Duplex mode and back pressure for Half Duplex mode alleviate the traffic congestion and make WI-PS105-24V work reliably.

Easy to Use

The auto features of this Ethernet switch make installation plug and play and hassle-free. No configuring is required. Auto MDI/MDIX eliminates the need for crossover cables. Auto-negotiation on each port senses the link speed of a network device (10, 100 Mbps) and intelligently adjusts for compatibility and optimal performance.

Specifications

HARDWARE FEATURES	
Interface	6 10/100Mbps RJ45 Ports
Network Media	10/100BASE-TX: UTP category 5 or better (maximum 100m)
Fan Quantity	Fanless
Power Consumption	65W (max. with PoE device connected)
Internal Power Supply	AC 110-240V
PoE Ports (RJ45)	PoE Ports: Port1- Port4 Power Supply: 65W PoE PIN: 4,5+ 7,8-
Backbound Bandwidth	1Gbps
Mac Address Table	2Kbps
Buffer	768Kb
Jumbo Frame	10240Bytes
Dimensions	190mm*130mm*35mm (L*W*H)

SOFTWARE FEATURES	
Transmission Method	Store-And-Forward
Advanced Functions	Priority Function Mac Address Auto-Learning And Auto-Aging Store and forward IEEE 802.3x flow control for Full-duplex Mode Backpressure for Half-duplex Mode

OTHERS	
Certification	CE, FCC, RoHS
Package Contents	POE Switch Electric Line Guide Book/Warranty Card
Environment	Operating Temperature: -10°C~55°C