



**WI-PS126G-24V**  
**24FE+2Gigabit 24V Ports PoE Switch**  
**with 24-Port PoE**  
**Data sheet**

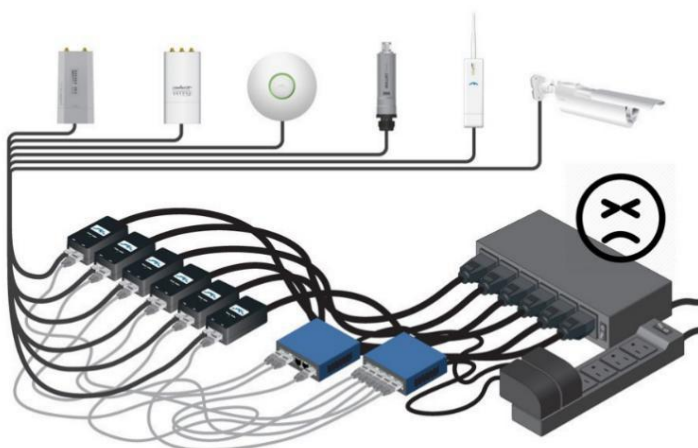
## Highlights

- 24 100Mbps Ports with 24 Passive PoE, 2 Gigabit Ports
- Supports PoE power up to 24W for each port
- Supports 24V Passive PoE compliant PDs
- Internal power adapter supply 300W output power
- LED indicators for LINK/ACT, Power, PoE Status, 100/1000Mbps
- 8K entry MAC address table with auto-learning and auto-aging

## Product



## Typical Applications



### WI-TEK 24V Passive PoE Switch



## Description

### What This Product Does

26-Port PoE Switch with 24-Port 100M PoE provides the seamless network connection. It integrates 1000Mbps Gigabit Ethernet and 10/100Mbps Fast Ethernet network capabilities.

### How This Product Works

24 Auto-Negotiation RJ45 ports (port-1 to port-24) of the switch support Power over Ethernet (PoE) function. These PoE ports can automatically detect and supply power with those Passive PoE compliant Powered Devices (PDs). In this situation, the electrical power is transmitted along with data in one single cable allowing you to expand your network where there are no power lines or outlets, where you wish to fix devices such as APs, IP Cameras or IP Phones, etc.

### Easy To Use

WI-PS126G-24V is easy to install and use. It requires no configuration and installation. With outstanding performance and quality, the WI-PS126G-24V 26-Port PoE Switch with 24-Port PoE is a great selection for expanding your home or office network.

## Specifications

HARDWARE FEATURES	
Interface	24 100M POE

## HARDWARE FEATURES

	2 1000M Uplink Ports
<b>Network Media</b>	<p>10Base -T: Pair 2 Category 3 (Cat3) and above UTP/STP (≤100m)</p> <p>100Base-TX: Pair 2 Category 5 (Cat5) and above UTP/STP (≤100m)</p> <p>1000Base-T: Pair 4 Category 5 (Cat5e) and above UTP/STP (≤100m)</p> <p>1000Base-SX: 62.5μm/50μm MMF (2m~550m)</p> <p>1000Base-LX: 62.5μm/50μm MM (2m~550m) or 10μm SMF (2m~5000m)</p>
<b>Fan Quantity</b>	Fan
<b>Power Budget</b>	300W
<b>Internal Power Supply</b>	AC 110~240V 50/60HZ
<b>PoE Ports (RJ45)</b>	<p>PoE PIN: 4,5+ 7,8-</p> <p>PoE Ports: Port1- Port24</p> <p>Power Supply: 300W</p>
<b>Exchange Capacity</b>	8.8G
<b>Mac Address Table</b>	8K
<b>Packet</b>	6.5Mpps

HARDWARE FEATURES	
<b>Forwarding Rate</b>	
<b>Buffer</b>	2Mb
<b>Jumbo Frame</b>	10240Bytes
<b>Dimensions</b>	Product Size: 440mm*290mm*45mm (L*W*H)

SOFTWARE FEATURES	
<b>Transmission Method</b>	Store-And-Forward
<b>Advanced Functions</b>	Priority Function Mac Address Auto-Learning And Auto-Aging Store and forward IEEE 802.3x flow control for Full-duplex Mode Backpressure for Half-duplex Mode

OTHERS	
<b>Certification</b>	CE, FCC, RoHS
<b>Package</b>	POE Switch

<p><b>Contents</b></p>	<p>Electric Line Guide Book/Warranty Card</p>
<p><b>Environment</b></p>	<p>Working Temperature: -10°C ~ 55°C Storage temperature : -40°C ~ 70°C Working Humidity : 10% ~ 90% RH non-condensing Storage Humidity: 5% ~ 90% RH non- condensing</p>