



**WI-PS326GF-24V
24GE+2SFP 24V Ports
PoE Switch with 23-Port PoE
Data sheet**

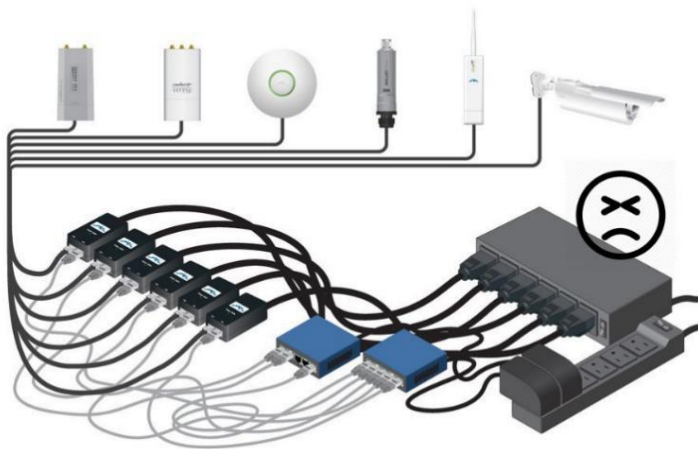
Highlights

- 23GE+(1GE+2SFP)uplink Full Giga 24V Passive PoE Switch with 23 Port PoE
- Supports PoE power up to 24W for each port
- Supports 24V Passive PoE compliant PDs
- Internal power adapter supply 250W output power
- LED indicators for LINK/ACT, Power, PoE Status, 100/1000Mbps
- 8K entry MAC address table with auto-learning and auto-aging

Product



Typical Applications



WI-TEK 24V Passive PoE Switch



Description

What This Product Does

23GE+1GE+2SFP Port Gigabit Switch with 23-Port PoE provides the seamless network connection. It integrates 1000Mbps Gigabit Ethernet and 10/100Mbps Fast Ethernet network capabilities.

How This Product Works

23 Auto-Negotiation RJ45 ports (port-1 to port-24) of the switch support Power over Ethernet (PoE) function. These PoE ports can automatically detect and supply power with those Passive PoE compliant Powered Devices (PDs). In this situation, the electrical power is transmitted along with data in one single cable allowing you to expand your network where there are no power lines or outlets, where you wish to fix devices such as APs, IP Cameras or IP Phones, etc.

Easy To Use

WI-PS326GF-24V is easy to install and use. It requires no configuration and installation. With outstanding performance and quality, the WI-PS326GF-24V 23GE+1GE+2SFP Port Gigabit Switch with 23-Port PoE is a great selection for expanding your home or office network.

Specifications

HARDWARE FEATURES	
Interface	24 1000M Ports

HARDWARE FEATURES

	2 SFP Ports
Network Media	<p>10Base -T: Pair 2 Category 3(Cat3) and above UTP/STP(≤100m)</p> <p>100Base-TX: Pair 2 Category 5(Cat5) and above UTP/STP(≤100m)</p> <p>1000Base-T: Pair 4 Category 5(Cat5e) and above UTP/STP(≤100m)</p> <p>1000Base-SX: 62.5μm/50μm MMF(2m~550m)</p> <p>1000Base-LX: 62.5μm/50μm MM(2m~550m) or 10μm SMF(2m~5000m)</p>
Fan Quantity	2 Fan
Power Budget	250W
External Power Supply	AC 110~240V 50/60HZ
PoE Ports (RJ45)	<p>PoE PIN: 4,5+ 7,8-</p> <p>PoE Ports: Port1- Port23</p> <p>Power Supply: 250W</p>
Exchange Capacity	52G
Mac Address Table	8K
Packet	38.7Mpps

HARDWARE FEATURES	
Forwarding Rate	
Buffer	4Mb
Jumbo Frame	10240Bytes
Dimensions	Product Size: 440mm*290mm*45mm (L*W*H)

SOFTWARE FEATURES	
Transmission Method	Store-And-Forward
Advanced Functions	Priority Function Mac Address Auto-Learning And Auto-Aging Store and forward IEEE 802.3x flow control for Full-duplex Mode Backpressure for Half-duplex Mode

OTHERS	
Certification	CE, FCC, RoHS
Package	POE Switch

<p>Contents</p>	<p>Electric Line Guide Book/Warranty Card</p>
<p>Environment</p>	<p>Working Temperature: -10°C ~ 55°C Storage temperature : -40°C ~ 70°C Working Humidity : 10% ~ 90% RH non-condensing Storage Humidity: 5% ~ 90% RH non- condensing</p>