

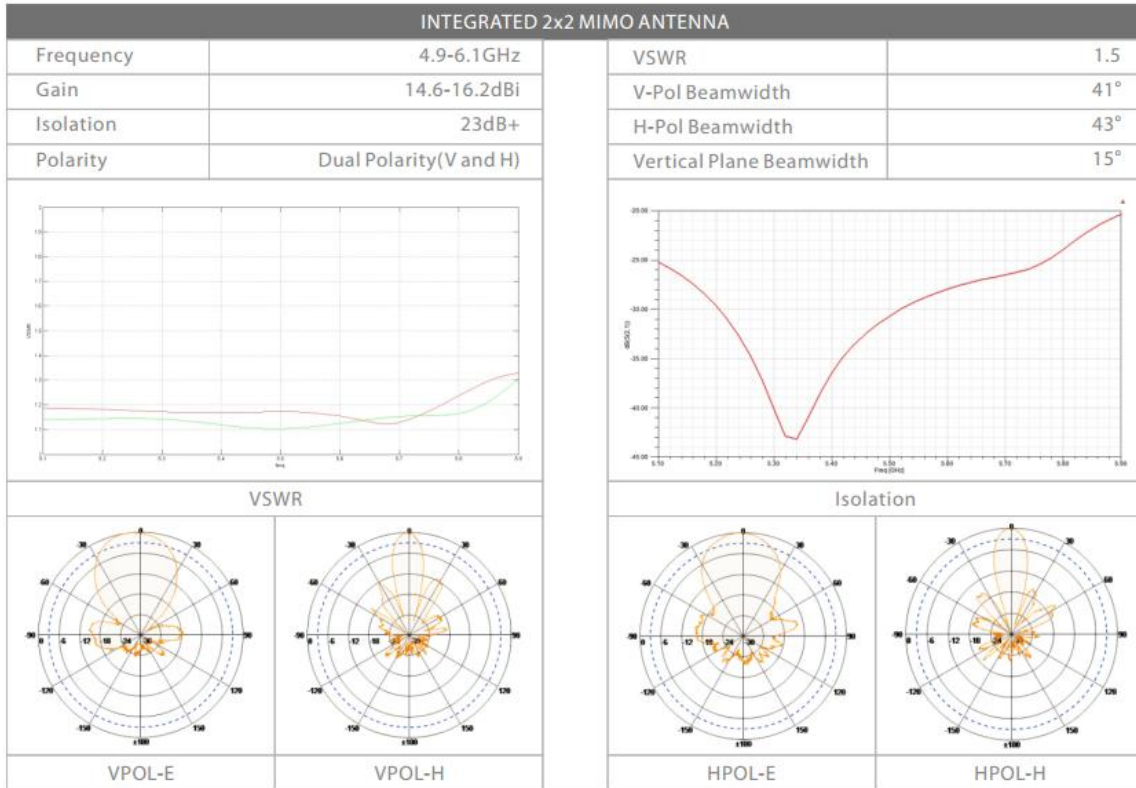


**WI-CPE517**  
**5.8GHz 300Mbps**  
**Outdoor CPE with Sector antenna**  
**Data sheet**

## Highlights

- 500mW High power output, coverage up to 10KM for PTP and PTMP application
- Wireless A/N speed up to 300Mbps
- Support open frequency from 4920 to 6100 MHz
- Inside 150 degree 16dBi Sector Antenna Technology
- 27dBm High-Power design
- 2x2 MIMO Technology
- Passive PoE Adapter supports up to 100 meter
- 2 PoE Port design, support PoE Pass-through
- Qualcomm AR9344 600MHz Chipset, 64MB RAM
- 10KV Lightning Protection
- Super TDMA Technology

Tx Power Specs				Rx Power Specs			
	Data Rate	Tx Power	Tolerance		Data Rate	Sensitivity	Tolerance
802.11a	6-24 Mbps	27 dBm	±2dB	802.11a	6-24 Mbps	-94 dBm	±2dB
	36 Mbps	25 dBm	±2dB		36 Mbps	-82 dBm	±2dB
	48 Mbps	23 dBm	±2dB		48 Mbps	-79 dBm	±2dB
	54 Mbps	23 dBm	±2dB		54 Mbps	-76 dBm	±2dB
802.11n	MCS0	27 dBm	±2dB	802.11n	MCS0	-93 dBm	±2dB
	MCS1	27 dBm	±2dB		MCS1	-88 dBm	±2dB
	MCS2	27 dBm	±2dB		MCS2	-86 dBm	±2dB
	MCS3	27 dBm	±2dB		MCS3	-82 dBm	±2dB
	MCS4	26 dBm	±2dB		MCS4	-80 dBm	±2dB
	MCS5	24 dBm	±2dB		MCS5	-75 dBm	±2dB
	MCS6	23dBm	±2dB		MCS6	-73 dBm	±2dB
	MCS7	23 dBm	±2dB		MCS7	-72 dBm	±2dB
	MCS8	27 dBm	±2dB		MCS8	-93 dBm	±2dB
	MCS9	27 dBm	±2dB		MCS9	-89 dBm	±2dB
	MCS10	27 dBm	±2dB		MCS10	-87 dBm	±2dB
	MCS11	27 dBm	±2dB		MCS11	-82 dBm	±2dB
	MCS12	26 dBm	±2dB		MCS12	-81 dBm	±2dB
	MCS13	24 dBm	±2dB		MCS13	-75 dBm	±2dB
	MCS14	23 dBm	±2dB		MCS14	-73 dBm	±2dB
MCS15	23 dBm	±2dB	MCS15	-72 dBm	±2dB		



## Product

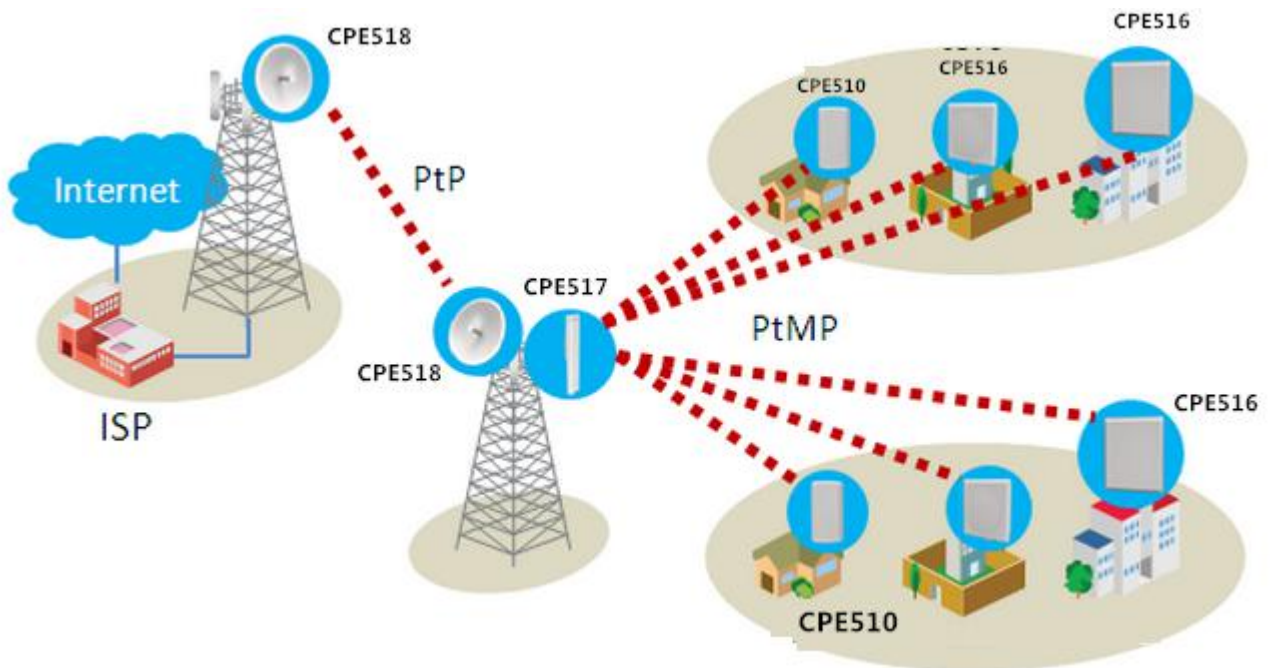


## Description

Wi-Tek's WI-CPE517 is a 300Mbps 2\*2 MIMO Hi-Power outdoor wireless sector bridge for extremely long range point-to-point solutions. It is revolutionary radio-in-feed dish design with high performance, cost-effective and dedicated to long distance wireless network solutions. Featuring the revolutionary Wi-Tek TDMA technology, WI-CPE517 is

fully compatible with Wi-Tek base station and CPE thus greatly improving the network scalability in throughput and latency. With 150degree 16dBi dual-polarized sector antenna, can work with WI-CPE515 or WI-CPE518 for point to multipoint wireless transmission. WI-CPE518 is best applied to rural wireless Internet, wireless backhaul and other industrial wireless solutions.

## Typical Applications



## Specifications

HARDWARE FEATURES	
<b>Processor</b>	Qualcomm AR9344
<b>Memory</b>	64MB SDRAM 8MB Flash
<b>Interface</b>	2X10/100BASE-TX Ethernet Interface
<b>Power Supply</b>	24V Passive PoE Adapter Included
<b>Power Consumption</b>	8W
<b>Dimensions ( H x W x D )</b>	380x150x75mm
<b>Antenna Type</b>	Built-in 16dBi Dual-polarized 150degree Sector Antenna Horizontal beam width: 150degree Vertical beam width: 15degree
<b>Protection</b>	10KV Lightning Protection
<b>Enclosure</b>	Outdoor UV Stabilized Plastic IP67 waterproof Certification
WIRELESS FEATURES	

<b>WIRELESS FEATURES</b>	
<b>Wireless Standards</b>	802.11a/n
<b>Protocol</b>	CSMA/CA, TCP/IP, IPX/SPX, NetBEUI, DHCP TDMA
<b>Wireless Mode</b>	AP, Client
<b>Wireless Speeds</b>	11a: 54M, 48M, 36M, 24M, 18M, 12M, 9M, 6Mbps 11n: 6.5M, 13M, 13.5M, 19.5M, 26M, 27M, 39M, 40.5M, 52M, 54M, 58.5M, 65M, 81M, 108M, 121.5M, 135M, 150M, 270M, 300Mbps
<b>Frequency</b>	4920-6100MHz
<b>Transmission Power</b>	27dBm(500mW)

**SOFTWARE FEATURES**

## SOFTWARE FEATURES

### Wireless Configurations

802.11a/n Modes  
Selectable Channel Width:  
20/40MHz  
Automatic Channel  
Selection  
Transmission Power Control  
Dynamic Frequency  
Selection (DFS)  
WDS Enable/Disable  
Security: WPA/WPA2, WPA-  
PSK/WPA2-PSK  
(AES/TKIP) Encryption,  
64/128/152-bit WEP  
Encryption  
SSID Broadcast  
Enable/Disable  
Distance/ACK Timeout  
Setting  
Wireless MAC Address  
Filter  
Wireless Advanced:  
> Beacon Interval/RTS  
Threshold/Fragmentation  
>Threshold/DTIM  
Interval/AP Isolation/Short  
GI/Wi-Fi Multimedia

### Management

WEP management

### System-level Optimizations

Optimized IGMP  
Snooping/Proxy for multicast  
applications  
Hardware watch dog

## OTHERS

<b>OTHERS</b>	
<b>Certification</b>	CE
<b>Package Contents</b>	1*CPE 1*PoE Adapter 1* Pole Mounting Kit included
<b>System Requirements</b>	Microsoft Windows 98SE, NT, 2000, XP, Vista™ or Windows 10, Windows 8, Windows 7, MAC OS, NetWare, UNIX or Linux. Note: We recommend you to use one of following Web browsers for an improved user experience: Google Chrome, Safari, and Firefox. IE browsers are not recommended.
<b>Environment</b>	Working Temp: -40 ~ 70°C Storage Temp: -40 ~85°C Working Humidity: 10%~95% non-condensing