



WI-PS110F
8FE+1Gigabit Combo 48V PoE Switch
with 8-Port PoE
Data sheet

Highlights

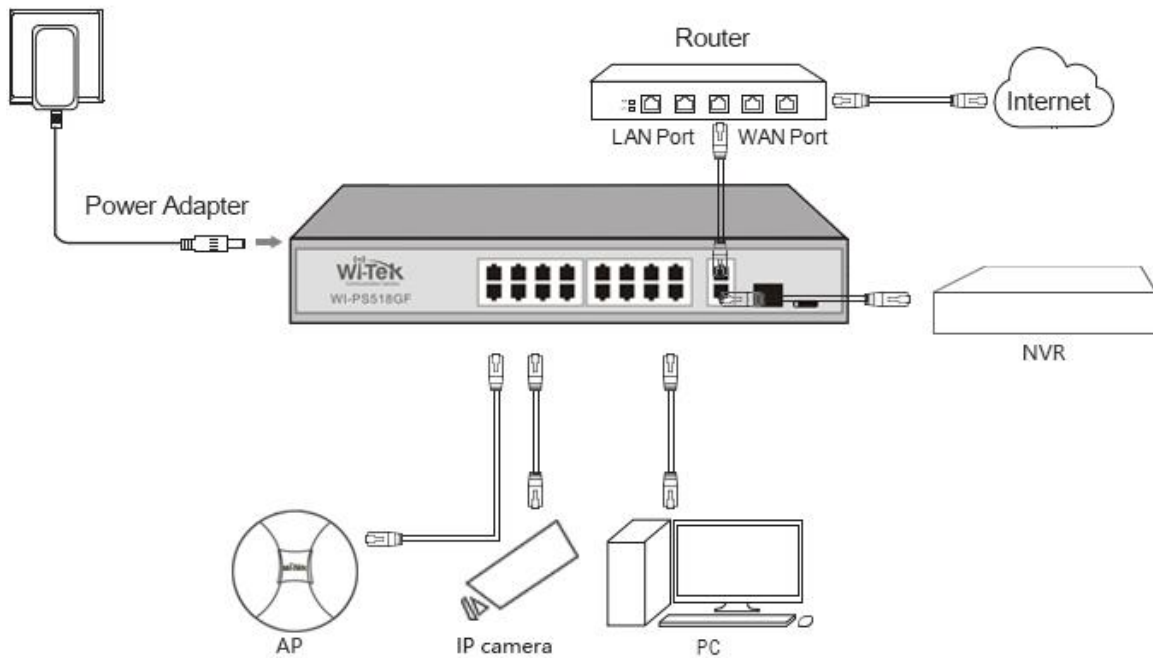
- 8FE+1Giga Combo SFP 802.3af/at PoE Switch with 8 Port PoE
- Supports PoE power up to 30W for each port
- Supports PoE IEEE 802.3af/at compliant PDs
- Internal power adapter supply 150W output power
- LED indicators for LINK/ACT, Power, PoE Status, 100/1000Mbps
- 4K entry MAC address table with auto-learning and auto-aging

Product



Typical Applications





Description

what this product does

WI-PS110F is a 8FE+1Combo 100/1000Mbps Ports unmanaged switch that requires no configuration and provides 8 PoE ports. The switch provides an easy way to expand your wired network. All 10 ports support auto-MDI/MDIX, eliminating the need to worry about the type of cable to use. Featuring full duplex mode, the WI-PS110F can process data at a rate of up to 200Mbps making it an ideal choice for expanding your high performance wired network. Moreover, with innovative energy-efficient technology, the WI-PS110F can save up to 68% of power consumption, making it an eco-friendly solution for your

home or office network.

High Performance

WI-PS110F Fast Ethernet Switch provides 8 10/100Mbps Auto-Negotiation RJ45 ports. All ports support Auto MDI/MDIX function, eliminating the need for crossover cables or Uplink ports. Featuring non-blocking switching architecture, WI-PS110F forwards and filters packets at full wire-speed for maximum throughput. With 10K Jumbo frame, the performance of large files transfers is improved significantly. And IEEE 802.3x flow control for Full Duplex mode and back pressure for Half Duplex mode alleviate the traffic congestion and make WI-PS110F work reliably.

Easy to Use

The auto features of this Ethernet switch make installation plug and play and hassle-free. No configuring is required. Auto MDI/MDIX eliminates the need for crossover cables. Auto-negotiation on each port senses the link speed of a network device (10, 100 Mbps) and intelligently adjusts for compatibility and optimal performance.

Specifications

| HARDWARE FEATURES | |
|----------------------|---|
| Interface | 8 10/100Mbps RJ45 Ports 1 Combo GE/SFP 1000M Ports |
| Network Media | 10/100/1000BASE-TX: UTP category 5 or better (maximum 100m) |

HARDWARE FEATURES

| | |
|-------------------------------|--|
| Fan Quantity | Fanless |
| Power Budget | 150W |
| Internal Power Supply | AC100~240V 50/60HZ |
| PoE Ports (RJ45) | Standard: 802.3 af/at compliant PoE Ports: Port1- Port8 |
| Backplane Bandwidth | 3.6Gbps |
| Mac Address Table | 4K |
| Packet Forwarding Rate | 2.7Mpps |
| Buffer | 768Kb |
| Jumbo Frame | 10240Bytes |
| Dimensions | 210mm*140mm*45mm (L*W*H) |

SOFTWARE FEATURES

| | |
|---------------------|-------------------|
| Transmission | Store-And-Forward |
|---------------------|-------------------|

| SOFTWARE FEATURES | |
|---------------------------|---|
| Method | |
| Advanced Functions | Priority Function Mac Address Auto-Learning And Auto-Aging Store and forward IEEE 802.3x flow control for Full-duplex Mode Backpressure for Half-duplex Mode |

| OTHERS | |
|-------------------------|---|
| Certification | CE, FCC, RoHS |
| Package Contents | POE Switch Electric Line Guide Book/Warranty Card |
| Environment | Operating Temperature: -10°C~55°C |