



WI-CPE514SMA
5.8GHz 300Mbps Outdoor CPE/Station
Data sheet

Highlights

- 500mW High power output, coverage up to 30KM for PTP and PTMP application
- Wireless A/N speed up to 300Mbps
- Support open frequency from 4920 to 6100 MHz
- 2*SMA connector support external Omni and directed external antenna
- 27dBm High-Power design
- 2x2 MIMO Technology
- Passive PoE Adapter supports up to 100 meter
- 2*100M PoE Port design, support PoE Pass-through
- Qualcomm AR9344 600MHz Chipset,64MB RAM
- Super TDMA Technology

Product

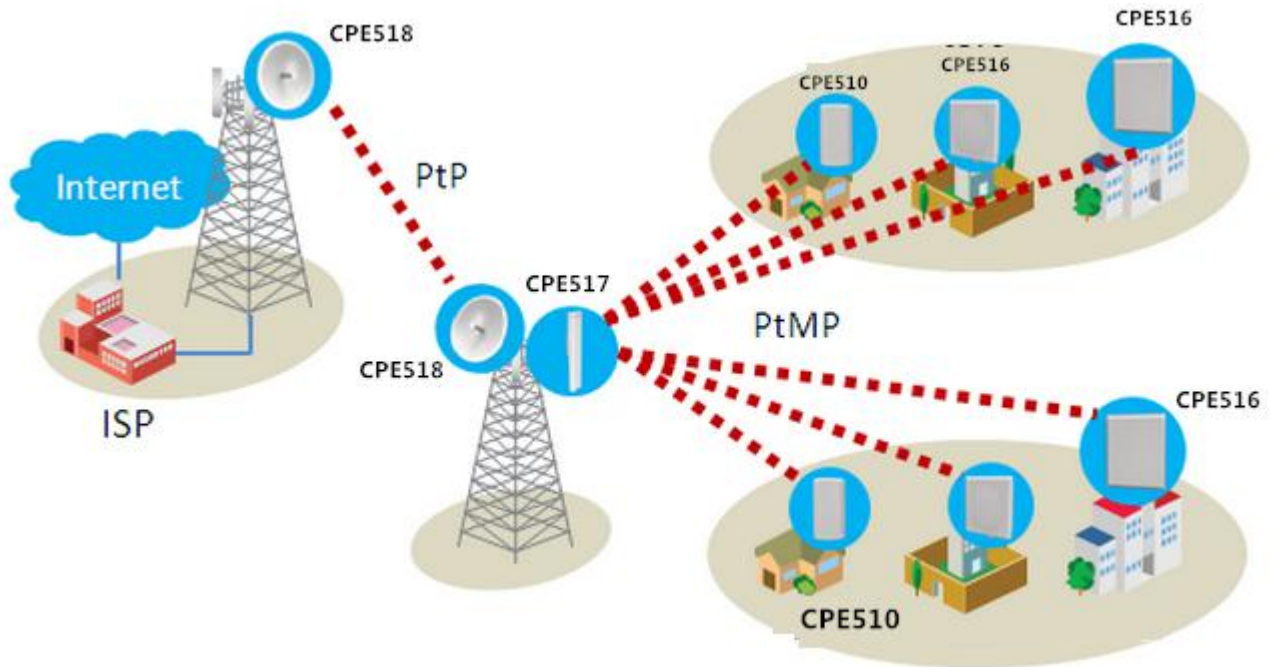


Description

Wi-Tek's WI-CPE514SMA is a 2*2 MIMO Hi-Power outdoor wireless base station based on OFDM and TDMA modulation technology. It is flexible detachable antenna design with high performance, cost-effective and dedicated to long distance wireless network solutions. Featuring the revolutionary Wi-Tek TDMA technology, WI-CPE514SMA helps to get more clients accessed than legacy WiFi technology and greatly improve the network scalability in throughput and latency. The detachable antenna design would help it seamlessly work with Wi-Tek outdoor antennas. WI-CPE514SMA is best applied to

rural wireless Internet, wireless hotspot and other industrial wireless solutions.

Typical Applications



Specifications

HARDWARE FEATURES	
Processor	Qaulcomm AR9344
Memory	64MB SDRAM 8MB Flash

Interface	2X10/100BASE-TX Ethernet Interface
Power Supply	24V Passive PoE Adapter Included
Power Consumption	8W
Dimensions (H x W x D)	260x100x60mm
Antenna Type	2 SMA Connector for external antenna
Protection	16KV Lightning Protection
Enclosure	Outdoor UV Stabilized Plastic IP65 waterproof Certification

WIRELESS FEATURES	
Wireless Standards	802.11a/n
Protocol	CSMA/CA, TCP/IP, IPX/SPX, NetBEUI, DHCP TDMA
Wireless Mode	AP, Client
Wireless Speeds	11a:54M,48M,36M,24M,18M,12M,9 M,6Mbps 11n:6.5M, 13M, 13.5M, 19.5M, 26M, 27M, 39M, 40.5M, 52M,

WIRELESS FEATURES	
	54M, 58.5M, 65M, 81M, 108M, 121.5M, 135M, 150M, 270M, 300Mbps
Frequency	4920-6100MHz
Transmission Power	27dBm(500mW)

SOFTWARE FEATURES	
Wireless Configurations	802.11a/n Modes Selectable Channel Width: 20/40MHz Automatic Channel Selection Transmission Power Control Dynamic Frequency Selection (DFS) WDS Enable/Disable Security: WPA/WPA2, WPA- PSK/WPA2-PSK (AES/TKIP) Encryption, 64/128/152-bit WEP Encryption SSID Broadcast Enable/Disable Distance/ACK Timeout Setting Wireless MAC Address Filter Wireless Advanced: > Beacon Interval/RTS Threshold/Fragmentation >Threshold/DTIM Interval/AP Isolation/Short GI/Wi-Fi Multimedia

SOFTWARE FEATURES	
Management	WEP management
System-level Optimizations	Optimized IGMP Snooping/Proxy for multicast applications Hardware watch dog

OTHERS	
Certification	CE
Package Contents	1*CPE 1*PoE Adapter 1* Pole Mounting Kit included
System Requirements	Microsoft Windows 98SE, NT, 2000, XP, Vista™ or Windows 10, Windows 8, Windows 7, MAC OS, NetWare, UNIX or Linux. Note: We recommend you to use one of following Web browsers for an improved user experience: Google Chrome, Safari, and Firefox. IE browsers are not recommended.
Environment	Working Temp: -40 ~ 70°C Storage Temp: -40 ~85°C Working Humidity: 10%~95% non-condensing