



WI-CPE515
5.8GHz 300Mbps Outdoor CPE
Data sheet

Highlights

- 500mW High power output, coverage up to 10KM for PTP and PTMP application
- Wireless B/G/N speed up to 300Mbps
- Support AP, Client mode
- Support open frequency from 4920 to 6100 MHz
- Inside 60 degree 16dBi Directional Antenna Technology
- 27dBm High-Power design
- 2x2 MIMO Technology
- Passive PoE Adapter supports up to 100 meter
- Qualcomm AR9344 600MHz Chipset, 64MB RAM
- 10KV Lightning Protection

Tx Power Specs				Rx Power Specs			
	Data Rate	Tx Power	Tolerance		Data Rate	Sensitivity	Tolerance
802.11b/g/n	1-24 Mbps	28 dBm	±2dB	802.11b/g/n	1-24 Mbps	-84 dBm	±2dB
	36 Mbps	26 dBm	±2dB		36 Mbps	-80 dBm	±2dB
	48 Mbps	25 dBm	±2dB		48 Mbps	-70 dBm	±2dB
	54 Mbps	24 dBm	±2dB		54 Mbps	-75 dBm	±2dB
802.11n	MCS0	28 dBm	±2dB	802.11n	MCS0	-96 dBm	±2dB
	MCS1	28 dBm	±2dB		MCS1	-95 dBm	±2dB
	MCS2	28 dBm	±2dB		MCS2	-92 dBm	±2dB
	MCS3	28 dBm	±2dB		MCS3	-90 dBm	±2dB
	MCS4	27 dBm	±2dB		MCS4	-86 dBm	±2dB
	MCS5	25 dBm	±2dB		MCS5	-83 dBm	±2dB
	MCS6	23 dBm	±2dB		MCS6	-77 dBm	±2dB
	MCS7	22 dBm	±2dB		MCS7	-74 dBm	±2dB
	MCS8	28 dBm	±2dB		MCS8	-95 dBm	±2dB
	MCS9	28 dBm	±2dB		MCS9	-93 dBm	±2dB
	MCS10	28 dBm	±2dB		MCS10	-90 dBm	±2dB
	MCS11	28 dBm	±2dB		MCS11	-87 dBm	±2dB
	MCS12	27 dBm	±2dB		MCS12	-84 dBm	±2dB
	MCS13	25 dBm	±2dB		MCS13	-79 dBm	±2dB
	MCS14	23 dBm	±2dB		MCS14	-78 dBm	±2dB
MCS15	22 dBm	±2dB	MCS15	-75 dBm	±2dB		

Product

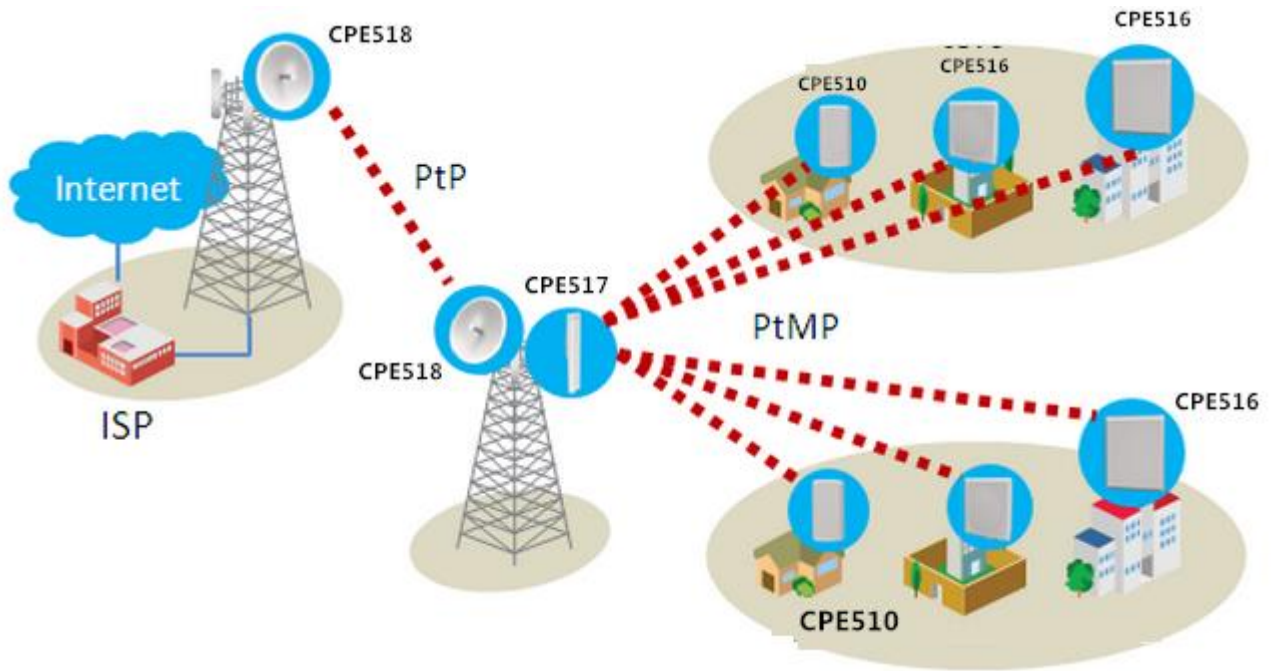


Description

Wi-Tek's WI-CPE515 is a 5.8GHz 300Mbps 2x2 MIMO outdoor wireless CPE based on 802.11a/b/g/n technology. It is high performance, cost-effective and dedicated to long distance wireless network solutions. Featuring the revolutionary Wi-Tek technology in firmware design and 16dBi directional dual-polarized antenna, WI-CPE515 is specialized designed for rural Internet access, long distance wireless data transmission, wireless coverage extension and other industrial wireless solutions. WI-CPE515 is widely used in various fields of communication:

- ◆Point-to-point, Point-to-multipoint wireless communication
- ◆Wireless Video Surveillance
- ◆Enterprise wireless LAN interconnection
- ◆Mobile operators WISP large customer access system
- ◆Wi-Fi Wireless city coverage

Typical Applications



Specifications

HARDWARE FEATURES	
Processor	Qualcomm AR9344
Memory	64MB SDRAM 8MB Flash
Interface	1X10/100BASE-TX Ethernet Interface
Power Supply	24V Passive PoE Adapter

	Included
Power Consumption	8W
Dimensions (H x W x D)	263x102x106mm
Antenna Type	Built-in 16dBi Dual-polarized Antenna Horizontal beam width: 60degree Vertical beam width: 15degree
Protection	10KV Lightning Protection
Enclosure	Outdoor UV Stabilized Plastic IP67 waterproof Certification

WIRELESS FEATURES	
Wireless Standards	802.11a/b/g/n
Protocol	CSMA/CA,TCP/IP,IPX/SPX, NetBEUI, DHCP
Wireless Mode	AP, Client
Wireless Speeds	11a:54M,48M,36M,24M,18M,12M,9M,6Mbps 11n:6.5M, 13M, 13.5M, 19.5M, 26M, 27M, 39M, 40.5M, 52M, 54M, 58.5M, 65M, 81M, 108M, 121.5M, 135M, 150M, 270M, 300Mbps

WIRELESS FEATURES

Frequency

4920 to 6100 MHz

Transmission Power

27dBm(500mW)

SOFTWARE FEATURES

Wireless Configurations

802.11a/b/g/n Modes
Selectable Channel Width:
20/40MHz
Automatic Channel Selection
Transmission Power Control
Dynamic Frequency Selection (DFS)
WDS Enable/Disable
Security: WPA/WPA2, WPA-PSK/WPA2-PSK (AES/TKIP) Encryption, 64/128/152-bit WEP Encryption
SSID Broadcast Enable/Disable
Distance/ACK Timeout Setting
Wireless MAC Address Filter
Wireless Advanced:
> Beacon Interval/RTS Threshold/Fragmentation
>Threshold/DTIM Interval/AP Isolation/Short GI/Wi-Fi
Multimedia

Management

WEP management

System-level Optimizations

Optimized IGMP Snooping/Proxy for multicast applications
Hardware watch dog

OTHERS	
Certification	CE
Package Contents	1*CPE 1*PoE Adapter 1* Pole Mounting Kit included
System Requirements	Microsoft Windows 98SE, NT, 2000, XP, Vista™ or Windows 10, Windows 8, Windows 7, MAC OS, NetWare, UNIX or Linux. Note: We recommend you to use one of following Web browsers for an improved user experience: Google Chrome, Safari, and Firefox. IE browsers are not recommended.
Environment	Working Temp: -40 ~ 70°C Storage Temp: -40 ~85°C Working Humidity: 10%~95% non-condensing